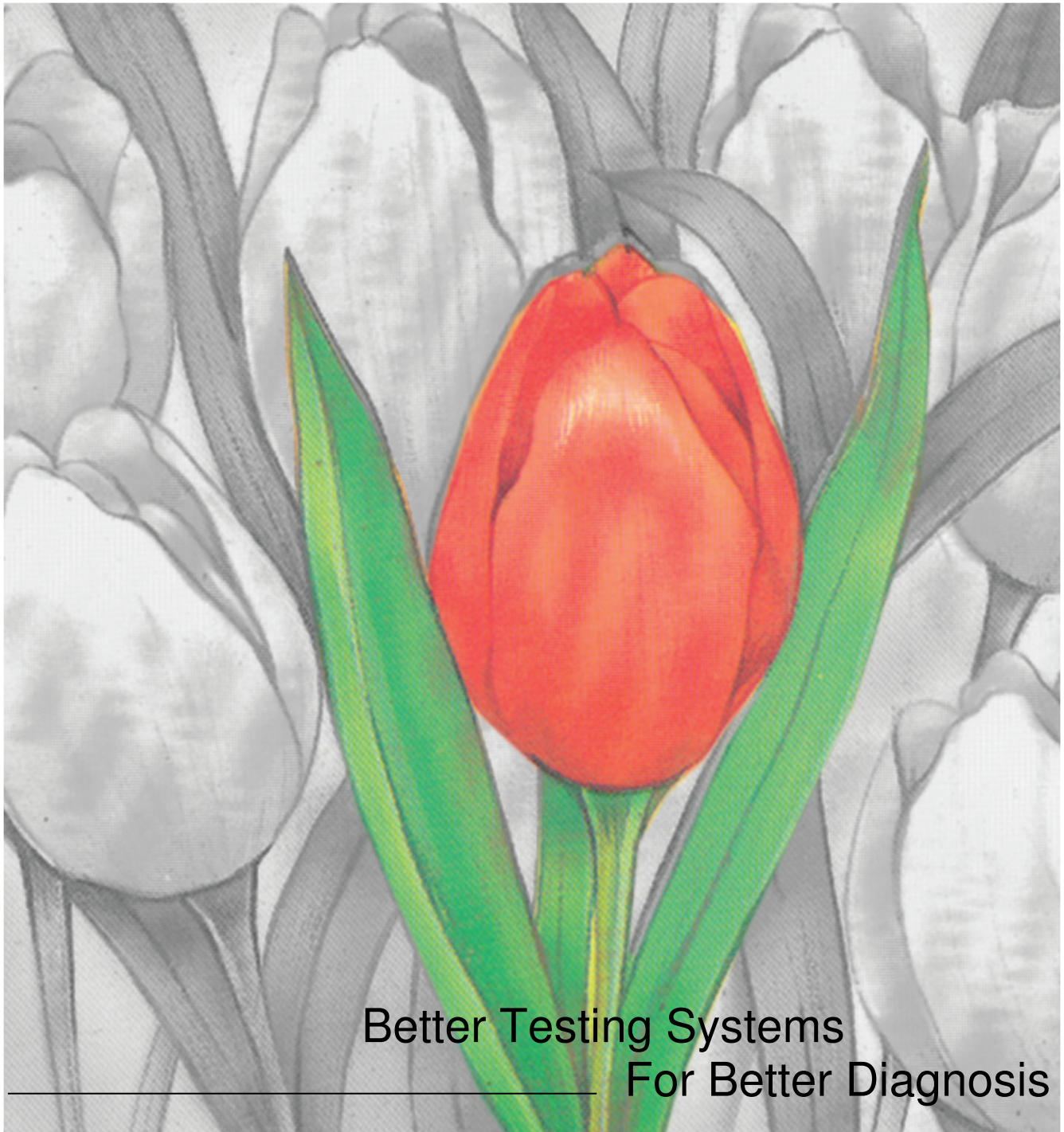


TULIP DIAGNOSTICS (P) LTD.

PRICE LIST
JUNE 2020



Better Testing Systems
For Better Diagnosis

| IMMUNOHAEMATOLOGY | | REAGENTS FOR FORWARD / SUB GROUPING ●●●●●● | |
|--------------------------------------|---|--|--------------------|
| PRODUCT | DESCRIPTION | PACK | M.R.P. |
| | | | Inclusive of Taxes |
| ERYCLONE ANTI – A | Murine monoclonal IgM reagent for forward grouping | 5 ml | 78 |
| | | 10 ml | 134 |
| | | 10x5 ml | 775 |
| | | 6x10 ml | 784 |
| ERYCLONE ANTI – B | Murine monoclonal IgM reagent for forward grouping | 5 ml | 78 |
| | | 10 ml | 134 |
| | | 10x5 ml | 775 |
| | | 6x10 ml | 784 |
| ERYCLONE ANTI – A, B | Murine monoclonal IgM reagent for forward grouping | 5 ml | 84 |
| | | 10 ml | 146 |
| | | 10x5 ml | 775 |
| | | 6x10 ml | 840 |
| ERYCLONE ANTI – D (IgG) | Monoclonal IgG reagent for Rho (D) typing | 5 ml | 311 |
| | | 10 ml | 596 |
| | | 10x5 ml | 2908 |
| | | 6x10 ml | 3373 |
| ERYCLONE ANTI – D (IgM) | Monoclonal IgM reagent for Rho (D) typing | 5 ml | 280 |
| | | 10 ml | 504 |
| | | 10x5 ml | 2520 |
| | | 6x10 ml | 2856 |
| RHOFINAL | Blend of Monoclonal IgM + IgG reagent for Rho (D) typing | 5 ml | 310 |
| | | 10 ml | 560 |
| | | 10x5 ml | 2800 |
| | | 6x10 ml | 3170 |
| ERYSCREEN | ABO / Rho(D) reagent combipack for routine grouping and typing | 3x5 ml | 426 |
| | | 3x10 ml | 700 |
| | | 3x12 ml | 739 |
| ERYSCREEN PLUS | ABO / Rho (D) reagent combipack for routine grouping and typing | 3x10 ml | 812 |
| | | 3x12 ml | 857 |
| ERYSCREEN TOTAL | ABO / Rho (D) reagent combipack for routine grouping, typing and confirmation | 4x12ml | 840 |
| ERYBANK Rh-hr CONTROL (IgM) | Negative control for Rho (D) typing and serological applications | 5 ml | 238 |
| ERYBANK BOVINE SERUM ALBUMIN | 22% Purified Bovine Serum Albumin for serological applications | 5 ml | 240 |
| | | 10 ml | 456 |
| | | 10x5 ml | 2286 |
| | | 6x10 ml | 2520 |
| ERYBANK ANTI – A ₁ LECTIN | Reagent for differentiation of A ₁ and A ₂ subgroups | 5ml | 384 |
| ERYBANK ANTI – H LECTIN | Reagent for H antigen determination and subgrouping | 5ml | 384 |
| ERYCLONE ANTI – C | Murine monoclonal IgM reagents for Rh genotyping | 2 ml | 1818 |
| ERYCLONE ANTI – c | | 2 ml | 623 |
| ERYCLONE ANTI – E | | 2 ml | 973 |
| ERYCLONE ANTI – e | | 2 ml | 2076 |
| LIQUIPAP | Liquid stable papain enzyme for serological applications | 5 ml | 690 |
| LYOPAP | Lyophilized Papain Enzyme for serological applications | 6x1 ml | 820 |

| IMMUNOHAEMATOLOGY | | REAGENTS FOR RH TYPING & CROSSMATCHING ●●●●●● | |
|-----------------------------------|---|---|--------------------|
| PRODUCT | DESCRIPTION | PACK | M.R.P. |
| | | | Inclusive of Taxes |
| ERYCLONE ANTI HUMAN GLOBULIN | Polyspecific AHG reagent for direct and indirect Coombs test | 2 ml | 319 |
| | | 5 ml | 623 |
| | | 10x5 ml | 5196 |
| | | 6x10 ml | 5875 |
| ERYCLONE MONOSPECIFIC COOMBS SERA | Murine monoclonal Anti-C3d antibodies for direct and indirect Coombs test | 2 ml | 342 |
| ERYBANK MONOSPECIFIC COOMBS SERA | Polyclonal Anti-IgG antibodies for direct and indirect Coombs test | 2 ml | 342 |

| IMMUNOHAEMATOLOGY | | REAGENTS FOR SPECIAL ●●●●●● | |
|-------------------|--|-----------------------------|--------------------|
| PRODUCT | DESCRIPTION | PACK | M.R.P. |
| | | | Inclusive of Taxes |
| AGTROL | Appropriately diluted monoclonal Anti-D IgG and red cell preserving solution starter pack for preparation of Coomb's control cells in situ | 10 ml | 250 |
| TULISS | Low ionic strength solution for serological applications | 5 ml | 251 |
| ERYWELL | Red cell preserving solution for preparation of cell panels in situ for serological applications | 20 ml | 90 |

| IMMUNOHAEMATOLOGY | | REAGENT PANEL CELLS ●●●● | |
|-------------------|--|--------------------------|--------------------|
| PRODUCT | DESCRIPTION | PACK | M.R.P. |
| | | | Inclusive of Taxes |
| ERYGEN-ABO | A panel of 3% reagent red blood cells for ABO grouping. | 3X2 ml | 1008 |
| ERYGEN AC | A panel of 3% reagent red blood cells for quality control of anti-human globulin procedure (Coomb's control cells) | 2 ml | 252 |

| IMMUNOHAEMATOLOGY | | CARD TEST FOR BLOOD GROUPING | |
|---------------------------|---|------------------------------|--------------------|
| PRODUCT | DESCRIPTION | PACK | M.R.P. |
| | | | Inclusive of Taxes |
| ERYCARD™ 2.0 | Card test for ABO Rho(D) forward grouping with Autocontrol. | 24 Cards | 700 |
| ERYCARD™ Micropipette 5µl | Fixed volume 5µl Micropipette for sample dispensing on ERYCARD™ | 1 Pipette | 250 |
| ERYCARD™ Micropipette Tip | Micropipette tips for ERYCARD™ Micropipette | 100 Tips | 110 |
| ERYCARD™ ABO | Blood grouping card for ABO forward grouping with Autocontrol | 24 Cards | 637 |

| IMMUNOLOGY | | RHEUMATOLOGY REAGENTS ●●●●●●●●●● | |
|--------------|---|----------------------------------|--------------------|
| PRODUCT | DESCRIPTION | PACK | M.R.P. |
| | | | Inclusive of Taxes |
| RHELAX – RF | Latex agglutination slide test for detection of IgM rheumatoid factors | 35 Tests | 551 |
| | | 70 Tests | 979 |
| | | 100 Tests | 1285 |
| RHELAX - CRP | Latex agglutination slide test for detection of C - Reactive Protein | 35 Tests | 967 |
| | | 70 Tests | 1665 |
| | | 100 Tests | 2122 |
| RHELAX - ASO | Latex agglutination slide test for detection of Anti - Streptolysin 'O' | 35 Tests | 1365 |
| | | 70 Tests | 2528 |
| | | 100 Tests | 3580 |
| RHELAX – SLE | Latex agglutination slide test for detection of Anti - DNP | 10 Tests | 736 |
| | | 25 Tests | 1934 |

| IMMUNOLOGY | | FERTILITY RANGE●●●●●●●●●● | |
|------------|------------------------------------|---------------------------|--------------------|
| PRODUCT | DESCRIPTION | PACK | M.R.P. |
| | | | Inclusive of Taxes |
| TINA – HCG | One step Pregnancy test (Dipstick) | 30 Tests | 1440 |
| | One step Pregnancy test (Device) | 50Tests | 3900 |

| IMMUNOLOGY | | INFECTIOUS DISEASE REAGENTS ●●●●●●●● | |
|------------------------|---|--------------------------------------|--------------------|
| PRODUCT | DESCRIPTION | PACK | M.R.P. |
| | | | Inclusive of Taxes |
| TREPOLIPIN | Modified VDRL reagent for detection of Anti-lipoidal antibodies in Syphilis | 5x5 ml | 2496 |
| | | 50 Tests | 278 |
| | | 100 Tests | 422 |
| CARBOGEN | RPR Card test for detection of Anti-lipoidal antibodies in Syphilis | 5 ml | 1114 |
| | | 50 Tests | 416 |
| | | 100 Tests | 674 |
| | | 250 Tests | 1458 |
| TYDAL | Ready to use Colour Coded WIDAL antigen set for slide and tube tests | O & H 2x2x5 ml | 463 |
| | | 4x5 ml | 420 |
| TYPHOCHECK | Ready to use WIDAL antigen set for tube test | 4x50 ml | 436 |
| VITAL WIDAL | Ready to use vitally stained WIDAL antigen set for tube test | 2x10 ml | 449 |
| | | 4x10 ml | 784 |
| WIDAL POSITIVE CONTROL | For validation of the performance of Widal O,H, AH, BH antigen suspensions. | 1 ml | 420 |

| IMMUNOLOGY | | INFECTIOUS DISEASE REAGENTS ●●●●●●●● | |
|------------------------------|--|--------------------------------------|--------------------|
| PRODUCT | DESCRIPTION | PACK | M.R.P. |
| | | | Inclusive of Taxes |
| BRUCEL – A | Smooth attenuated suspension of Brucella abortus antigen for slide and tube tests | 5 ml | 1470 |
| BRUCEL – M | Smooth attenuated suspension of Brucella melitensis antigen for slide and tube tests | 5 ml | 1470 |
| BRUCEL – RB | Smooth attenuated suspension of Brucella abortus antigen stained with Rose Bengal dye for slide tests | 5 ml | 1470 |
| BRUCellosis POSITIVE CONTROL | For validation of the performance of Brucella abortus / melitensis antigen suspensions. | 0.5 ml | 247 |
| PROGEN OX19 | Smooth killed antigen suspension of Proteus OX19 for Weil-Felix test | 5 ml | 1452 |
| PROGEN OX2 | Smooth killed antigen suspension of Proteus OX2 for Weil-Felix test | 5 ml | 1452 |
| PROGEN OXK | Smooth killed antigen suspension of Proteus OXK for Weil-Felix test | 5 ml | 1452 |
| PROGEN POSITIVE CONTROL | For validation of the performance of Proteus antigen suspensions. | 1 ml | 480 |
| TULIP's FEBRILE ANTIGEN SET | Febrile antigen panel for serodiagnosis of antibodies to <i>S.typhi</i> , <i>S.patyphi</i> , <i>Brucella</i> & <i>Proteus</i> antigens | 6 X 5 ml | 2472 |
| TOXOGEN | Latex agglutination slide test for screening of <i>T.gondii</i> antibodies | 25 Tests | 1586 |
| IMMUTEX | Haemagglutination slide test for detection of heterophile antibodies in Infectious Mononucleosis | 20 Tests | 1848 |
| PARATROL | Control set for Immunological assays of <i>P. falciparum</i> , <i>P.vivax</i> Malaria antigen detection | 3x2x0.2 ml | 1320 |
| PUO SCREEN | Screening Test for Typhoid, Brucellosis and Scrub Typhus fever | 3x2 ml | 414 |

| IMMUNO CHEMISTRY | | IMMUNOTURBIDIMETRY REAGENTS●●●●●●●● | |
|----------------------|---|-------------------------------------|--------------------|
| PRODUCT | DESCRIPTION | PACK | M.R.P. |
| | | | Inclusive of Taxes |
| Turbodyne RF | Immunoturbidimetric Assay For Determination of Serum RF on Turbodyne™ SC | 20 Tests | 1140 |
| Turbodyne CRP UV | Immunoturbidimetric Assay For Determination of Serum CRP on Turbodyne™ SC | 20 Tests | 1200 |
| Turbodyne ASO | Immunoturbidimetric Assay For Determination of Serum ASO on Turbodyne™ SC | 20 Tests | 1400 |
| Turbodyne MA | Immunoturbidimetric Assay For Determination of Microalbuminuria (MA) on Turbodyne™ SC | 20 Tests | 1620 |
| Turbodyne D-Dimer | Immunoturbidimetric Assay For Determination of Plasma D-Dimer on Turbodyne™ SC | 20 Tests | 5625 |
| Turbodyne Cystatin C | Immunoturbidimetric Assay For Determination of Serum Cystatin C on Turbodyne™ SC | 20 Tests | 4500 |
| Turbodyne HbA1c | Immunoturbidimetric Assay For Determination of HbA1c in Human blood on Turbodyne™ SC | 20 Tests | 2900 |
| Turbodyne IgE | Immunoturbidimetric Assay For Determination of IgE in Human serum on Turbodyne™ SC | 20 Tests | 3500 |
| Turbodyne C3 | Immunoturbidimetric Assay For Determination Of C3 In Human Serum On Turbodynetm Sc | 20 Tests | 2300 |
| Turbodyne C4 | Immunoturbidimetric Assay For Determination Of C4 In Human Serum On Turbodynetm Sc | 20 Tests | 2300 |

| IMMUNO CHEMISTRY | | CONTROLS●●●●●●●● | |
|------------------------------|--|------------------|--------------------|
| PRODUCT | DESCRIPTION | PACK | M.R.P. |
| | | | Inclusive of Taxes |
| Turbodyne control RF | Control for quality control procedures | 0.5 ml | 315 |
| Turbodyne control CRP UV | Control for quality control procedures | 0.5 ml | 315 |
| Turbodyne control ASO | Control for quality control procedures | 0.5 ml | 565 |
| Turbodyne control MA | Control for quality control procedures | 0.5 ml | 375 |
| Turbodyne control D-Dimer | Control for quality control procedures | 0.5 ml | 600 |
| Turbodyne control Cystatin C | Control for quality control procedures | 0.2 ml | 600 |
| Turbodyne control HbA1c | Control for quality control procedures | 0.2 ml | 750 |
| Turbodyne control IgE | Control for quality control procedures | 0.2 ml | 565 |
| Turbodyne C3 control | Control for quality control procedures | 0.2 ml | 575 |
| Turbodyne C4 control | Control for quality control procedures | 0.2 ml | 575 |

| HAEMATOLOGY | | HAEMATOLOGY REAGENTS ●●●●●●●● | |
|-------------|---|-------------------------------|--------------------|
| PRODUCT | DESCRIPTION | PACK | M.R.P. |
| | | | Inclusive of Taxes |
| SICKLEVUE | Solubility test for detection of Hemoglobin S | 20 Tests | 630 |
| THALVUE | Turbidimetric test for the detection of Beta thalassaemia | 25 Tests | 930 |

| PHLEBOTOMY | | ANTISEPTIC REAGENT ●●●●●●●● | |
|------------|--------------------------------|-----------------------------|--------------------|
| PRODUCT | DESCRIPTION | PACK | M.R.P. |
| | | | Inclusive of Taxes |
| INJECTA | Antiseptic for safe phlebotomy | 1 Litre | 315 |
| | | 5 Litres | 1440 |
| | | 200 ml (spray) | 160 |

| HAEMOSTASIS | | REAGENTS FOR ROUTINE SCREENING ●●●●●●●● | |
|-------------|--|---|--|
|-------------|--|---|--|

| PRODUCT | DESCRIPTION | PACK | M.R.P. |
|------------------------------------|---|----------|--------------------|
| | | | Inclusive of Taxes |
| UNIPLASTIN | Liquid stable, ready to use ResponsiveThromboplastin reagent for PT determination | 5 ml | 630 |
| | | 12x5 ml | 7302 |
| LIQUIPLASTIN | Liquid stable, ready to use Thromboplastin reagent for PT determination | 5 ml | 522 |
| | | 12x5 ml | 6158 |
| LIQUICELIN – E | Liquid stable, ready to use Cephaloplastin reagent for APTT determination | 3ml | 678 |
| | | 12x3 ml | 7872 |
| LIQUIPLASTIN PRECISION COMBIPACK | Combipack of ready to use liquid stable Liquiplastin (PT) reagent and 3.2% (0.109M) buffered trisodium citrate blood collection anticoagulant | 5 ml | 576 |
| UNIPLASTIN PRECISION COMBIPACK | Combipack of ready to use liquid stable Uniplastin (PT) reagent and 3.2% (0.109M) buffered trisodium citrate blood collection anticoagulant | 5 ml | 672 |
| LIQUICELIN – E PRECISION COMBIPACK | Combipack of ready to use liquid stable Liquicelin - E (APTT) reagent and 3.2% (0.109M) buffered trisodium citrate blood collection anticoagulant | 2.5 ml | 588 |
| LYOPLASTIN | Lyophilized calcified rabbit brain thromboplastin reagent for PT determination | 12x4ml | 4896 |
| CELIN – SE | Liquid stable, ready to use, soyabeancephaloplastin reagent for APTT determination | 12x3ml | 6533 |
| CALCIUM CHLORIDE | Ready to use 0.02M CaCl ₂ solution for APTT tests | 10 ml | 179 |
| | | 10x10 ml | 1607 |
| PROFACT | Ready to use 3.2% Buffered Tri Sodium Citrate blood collection Anticoagulantfor routine coagulation assays and ESR by Westergren Method | 20 ml | 108 |
| OPTIPLASTIN-r | Recombinant rabbit thromboplastin reagent for Prothrombin Time (PT) determination | 5 ml | 630 |
| | | 6 x 5 ml | 3651 |

| HAEMOSTASIS | | REAGENTS FOR SPECIAL APPLICATIONS ●●●●●●●● | |
|------------------------------|---|--|--------------------|
| PRODUCT | DESCRIPTION | PACK | M.R.P. |
| | | | Inclusive of Taxes |
| FIBROSCREEN | Thrombin Time reagent for qualitative estimation of Fibrinogen | 6x1 ml | 6615 |
| FIBROQUANT | Reagent for quantitative estimation of Fibrinogen | 20 Tests | 3150 |
| TULIP – XL FDP | Latex agglutination slide test for detection of cross linked fibrin degradation products | 15 Tests | 4092 |
| | | 60 Tests | 13734 |
| LADS | DRVVT for screening and confirmation of Lupus anticoagulants | 10 Tests | 3308 |
| LA SCREEN | DRVVT for screening of Lupus anticoagulants | 5 Tests | 1071 |
| LA CONFIRM | DRVVT for confirmation of Lupus anticoagulants | 5 Tests | 1071 |
| LUPAKCT | Kaolin clotting time test (KCT) for sensitive LA detection | 20 Tests | 1386 |
| TULIP PROTEIN C | Reagent for Quantitative Determination of Protein C activity in human plasma | 40 Tests | 11970 |
| TULIP PROTEIN S | Reagent for Determination of functional activity of Protein S in human plasma | 40 Tests | 21168 |
| PLASMATROL H – I | Level I control plasma for coagulation assays suitable for PT, APTT, TT and Fibrinogen assays | 6x1 ml | 1430 |
| PLASMATROL H – II | Level II control plasma for coagulation assays suitable for PT, APTT, TT and Fibrinogen assays | 6x1 ml | 1430 |
| PLASMATROL H – III | Level III control plasma for coagulation assays suitable for PT, APTT, TT and Fibrinogen assays | 6x1 ml | 1430 |
| PLASMATROL | Three level control plasmas for coagulation assays suitable for PT/APTT/TT and fibrinogen testing using clot based assays | 3x2x1ml | 1323 |
| PLASMATROL R | Reference Plasma for use with coagulation assays | 6x1 ml | 3780 |
| FACTOR VII DEFICIENT PLASMA | Factor VII deficient plasma for determination of factor VII activity | 3x1 ml | 5760 |
| FACTOR VIII DEFICIENT PLASMA | Factor VIII deficient plasma for determination of factor VIII activity | 3x1 ml | 5760 |
| FACTOR IX DEFICIENT PLASMA | Factor IX deficient plasma for determination of factor IX activity | 3x1 ml | 6000 |
| FACTOR V DEFICIENT PLASMA | Factor V deficient plasma for determination of factor V activity | 3x1 ml | 6000 |

| INSIGHT | | | |
|---------|-------------|------|--------------------|
| PRODUCT | DESCRIPTION | PACK | M.R.P. |
| | | | Inclusive of Taxes |

| | | | |
|-----------------|---|----------|------|
| INSIGHT HAV IgM | Rapid immunochromatographic assay for the detection of IgM antibodies to HAV in human serum /plasma | 10 Tests | 1380 |
| INSIGHT HEV IgM | Rapid immunochromatographic assay for the detection of IgM antibodies to HEV in human serum / plasma. | 10 Tests | 1380 |
| INSIGHT HBcAb | Rapid competitive immunochromatographic assay for the detection of HBcAb in human serum. | 10 Tests | 1380 |
| INSIGHT HBeAg | Rapid immunochromatographic assay for the detection of HBeAg in human serum. | 10 Tests | 1380 |
| INSIGHT HBeAb | Rapid competitive immunochromatographic assay for the detection of HBeAb in human serum. | 10 Tests | 1380 |
| INSIGHT HBsAb | Rapid immunochromatographic assay for the detection of HBsAb in human serum. | 10 Tests | 1380 |
| INSIGHT DOA 6.1 | Rapid competitive immunochromatographic assay for the simultaneous detection of Tetrahydrocannabinol, amphetamine, barbiturates, benzodiazepine, cocaine and opiates in human urine | 10 Tests | 2484 |
| INSIGHT PCP | Rapid Competitive limunochromatographic assay for the detection of Phencyclidine in human urine | 10 Tests | 552 |
| INSIGHT PPX | Rapid Competitive limunochromatographic assay for the detection of Propoxiphene in human urine | 10 Tests | 552 |
| INSIGHT OPI | Rapid competitive immunochromatographic assay for the detection of Opiates in human urine. | 10 Tests | 552 |
| INSIGHT COC | Rapid competitive immunochromatographic assay for the detection of Cocaine in human urine. | 10 Tests | 552 |
| INSIGHT AMP | Rapid competitive immunochromatographic assay for the detection of Amphetamines in human urine. | 10 Tests | 552 |
| INSIGHT MET | Rapid competitive immunochromatographic assay for the detection of Methamphetamine in human urine. | 10 Tests | 552 |
| INSIGHT BAR | Rapid competitive immunochromatographic assay for the detection of Barbiturates in human urine. | 10 Tests | 552 |
| INSIGHT BZO | Rapid competitive immunochromatographic assay for the detection of Benzodiazapines in human urine. | 10 Tests | 552 |
| NSIGHT THC | Rapid competitive immunochromatographic assay for the detection of Tetrahydrocannabinol in human urine. | 10 Tests | 552 |
| INSIGHT KET | Rapid competitive immunochromatographic assay for the detection of Ketamines in human urine. | 10 Tests | 552 |
| INSIGHT MTD | Rapid competitive immunochromatographic assay for the detection of Methadone in human urine. | 10 Tests | 552 |
| INSIGHT COT | Rapid competitive immunochromatographic assay for the detection of Nicotine (Cotinine) in human urine | 10 Tests | 1380 |
| INSIGHT RF | Rapid Immunochromatographic assay for the detection of Rheumatoid factors in human serum | 10 Tests | 290 |
| | | 25 Tests | 690 |
| INSIGHT CRP | Rapid Immunochromatographic assay for the detection of C-reactive protein in human serum | 10 Tests | 325 |
| | | 25 Tests | 780 |
| INSIGHT ASO | Rapid Immunochromatographic assay for the detection of Anti-Streptolysin O in human serum | 10 Tests | 350 |
| | | 25 Tests | 850 |

| IMMUNOHEMATOLGY | | MATRIX GEL SYSTEM REAGENTS ●●●●●●●● | |
|-----------------|-------------|-------------------------------------|--------|
| PRODUCT | DESCRIPTION | PACK | M.R.P. |

| | | | Inclusive of Taxes |
|--|---|----------|--------------------|
| MATRIX FORWARD & REVERSE GROUPING CARD WITH AUTOCONTROL | For ABD forward grouping and reverse grouping with auto-control | 24 cards | 2880 |
| MATRIX FORWARD GROUPING CONFIRMATION CARD | For Confirmation of ABO and Rho (D) blood group systems. | 24 cards | 3456 |
| MATRIX NEONATE GROUP CARD | For forward grouping and direct antiglobulin tests of Neonates | 24 cards | 2304 |
| MATRIX AHG (COOMBS) TEST CARD | For Direct Coombs Test, Indirect Coombs Test, Indirect Antibody test, Antibody Screening and Identification | 24 cards | 6912 |
| MATRIX COOMBS ANTI –IgG CARD | For all Coombs tests where Anti–C3d activity is not required. Can be used for Direct Coombs tests, indirect Coombs tests including Antibody Screening, Antibody identification, Compatibility testing and Weak D testing. | 24 cards | 6048 |
| MATRIX DIRECT ANTIGLOBULIN TEST CARD | For differentiation IgG and C3d sensitization for DAT positive samples. | 24 Cards | 3510 |
| MATRIX NEUTRAL GEL CARD | For saline and Enzyme phase tests including compatibility testing, Antibody Screening and Antibody Identification. | 24 cards | 5184 |
| MATRIX COOMBS AND NEUTRAL GEL CARD | For testing in Coombs and Enzyme/Saline phase in single card | 24 Cards | 6048 |
| MATRIX FORWARD GROUPING DAT CARD | For forward grouping using two clones of Anti-D in separate microtubes along with Direct Coombs tests | 24 Cards | 3168 |
| MATRIX FORWARD GROUPING & CROSSMATCH CARD | For forward grouping of both patient and donor, Saline or Enzyme phase major crossmatch, Coombs phase major crossmatch and a Coombs phase autocontrol for patient | 24 Cards | 4608 |
| MATRIX ABO SUBGROUPING CARD ANTI-A1 | For confirmation of A1 subgroup of A | 24 Cards | 6048 |
| MATRIX ABO SUBGROUPING CARD ANTI-H | For determination of H antigen in red cells | 24 Cards | 6048 |
| MATRIX RH PHENOTYPE CARD WITH ANTI-D | For determination of Phenotypes of Rh blood group system along with Anti-D | 24 Cards | 5760 |
| MATRIX RH PHENOTYPE CARD WITH ANTI-K | For determination of Phenotypes of Rh blood group system along with Anti-K | 24 Cards | 2400 |
| MATRIX OCTOPLUS COMPLETE GROUPING CARD | 8 Microtube gel cards for forward and Reverse grouping including Anti-AB and O cells microtube for reverse grouping | 24 Cards | 2106 |
| MATRIX OCTOPLUS FORWARD AND REVERSE GROUPING CARD WITH SUBGROUPING | 8 Microtube gel cards for forward and Reverse grouping including subgrouping with Anti-A1 lectin and Anti-H lectin | 24 Cards | 2106 |

| IMMUNOHEMATOLOGY | | MATRIX GEL SYSTEM REAGENTS & CONSUMABLES..... | |
|---------------------------|---|---|--------------------|
| PRODUCT | DESCRIPTION | PACK | M.R.P. |
| | | | Inclusive of Taxes |
| MATRIX DILUENT – 2 (LISS) | Modified Low Ionic Strength Saline Solution for preparation of red cell suspension | 250 ml | 1800 |
| MATRIX ANTI D IgG | For weak D testing in Matrix Gel Cards | 5 ml | 850 |
| MATRIX CONTAVOID | Disposable devices for piercing the aluminium foil seal of Matrix Gel Cards to avoid contamination | 100 Nos | 350 |
| MATRIX OCTOPLUS CONTAVOID | Disposable devices for piercing the aluminium foil seal of Matrix OctoPLUS Gel Cards to avoid contamination | 100 Units | 350 |

| IMMUNOHEMATOLOGY | | MATRIX QUALITY ASSURANCE SYSTEM | |
|---------------------|---|---------------------------------------|--------------------|
| PRODUCT | DESCRIPTION | PACK | M.R.P. |
| | | | Inclusive of Taxes |
| MATRIX QAS LEVEL-I | For quality assurance testing in Matrix Gel Cards containing Coombs reagent | 2 ml | 400 |
| MATRIX QAS LEVEL-II | For quality assurance of reagents and techniques related to Matrix Gel System and Classical tube techniques | 1 pack | 850 |

| IMMUNOHEMATOLOGY | | MATRIX REAGENT REDCELLS | |
|------------------|-------------|-------------------------------|--------------------|
| PRODUCT | DESCRIPTION | PACK | M.R.P. |
| | | | Inclusive of Taxes |

| | | | |
|-------------------------|--|-----------|-------|
| MATRIX ERYGEN-ABO | 0.8% reagent red blood cells for reverse grouping on Matrix™ Gel Cards | 3 x 2 ml | 700 |
| MATRIX ERYGEN-PO | 0.8% reagent red blood cells for Antibody Screening in Matrix Gel Cards | 1 x 5 ml | 800 |
| REACELL I, II, III | 0.8% Cell panel for Antibody Screening | 3 x 5 ml | 5000 |
| REACELL PANEL | 0.8% Cell panel for Antibody identification. | 11 x 5 ml | 20000 |
| REA IQC TOTAL BLOOD KIT | Red Blood Cell Suspension (15%) for internal quality control (Blood grouping Phenotyping Rh-Kell as C, c,E,e,Kell and antibody Screening) | 4x4 ml | 15000 |

| MICROBIOLOGY | MYCOBACTERIOLOGY REAGENTS ●●●●●●●●●● | | |
|------------------------|--|----------|--------------------|
| PRODUCT | DESCRIPTION | PACK | M.R.P. |
| | | | Inclusive of Taxes |
| ADA-MTB | For the determination of Adenosine Deaminase activity in serum, plasma and Biological fluids | 15 Tests | 1170 |
| ADAZYME | For the determination of Adenosine Deaminase activity in serum, plasma and Biological fluids by Enzymatic Method | 25 ml | 6000 |
| | | 10 ml | 2500 |
| ADAZYME Control Level1 | ADAZYMEControl for QC | 1ml | 840 |
| ADAZYME Control Level2 | ADAZYMEControl for QC | 1ml | 960 |

ORCHID BIOMEDICAL SYSTEMS

| IMMUNOLOGY | | FERTILITY RANGE ●●●●●●●●●● | |
|------------------|---|----------------------------|--------------------|
| PRODUCT | DESCRIPTION | PACK | M.R.P. |
| | | | Inclusive of Taxes |
| CLUE (Device) | Rapid One Step device for detection of hCG in urine during pregnancy (Sensitivity ~ 10 mIU/ml of hCG) | 25 Tests | 660 |
| | | 100 Tests | 2640 |
| CLUE (Dipsticks) | Rapid One Step dipstick for detection of hCG in urine during pregnancy (Sensitivity ~ 10 mIU/ml of hCG) | 25 Tests | 390 |
| | | 100 Tests | 1560 |

| IMMUNOLOGY | | INFECTIOUS DISEASE RANGE ●●●●●●●●●● | |
|-----------------------|--|-------------------------------------|--------------------|
| PRODUCT | DESCRIPTION | PACK | M.R.P. |
| | | | Inclusive of Taxes |
| VIRUCHECK (Device) | Rapid One Step device for the detection of HBsAg in serum / plasma (Sensitivity ~ 0.5 ng/ml of HBsAg ad/ay subtypes) | 25 Tests | 600 |
| VIRUCHECK (Dipsticks) | Rapid One Step dipstick for the detection of HBsAg in serum / plasma (Sensitivity ~ 0.5 ng/ml of HBsAg ad/ay subtypes) | 25 Tests | 480 |
| SLIM HBsAg | One step test for the detection of HBsAg in human serum/ plasma (Dipstick) | 20 Tests | 234 |

| IMMUNOLOGY | | PARASITOLOGY RANGE ●●●●●●●●●● | |
|--------------------------|--|-------------------------------|--------------------|
| PRODUCT | DESCRIPTION | PACK | M.R.P. |
| | | | Inclusive of Taxes |
| PARACHECK PF (Device) | Rapid One Step device for P. falciparum specific HRP- 2 Antigen in whole blood | 25 Tests | 1260 |
| PARACHECK PF (Dipsticks) | Rapid One Step dipstick for P. falciparum specific HRP- 2 Antigen in whole blood | 25 Tests | 1080 |

QUALPRO DIAGNOSTICS

| IMMUNOLOGY | | INFECTIOUS DISEASE RANGE ●●●●●●●● | |
|------------------------|---|-----------------------------------|--------------------|
| PRODUCT | DESCRIPTION | PACK | M.R.P. |
| | | | Inclusive of Taxes |
| SYPHICHECK WB (Device) | Rapid test for detection of antibodies to syphilis in serum/plasma or whole blood | 25 Tests | 702 |
| SYPHICHECK (Dipsticks) | Rapid test for detection of antibodies to syphilis in serum/plasma | 25 Tests | 450 |
| RETROCHECK HIV WB | Rapid immunochromatographic test for detection of HIV1/2 antibodies in serum / plasma /whole blood | 100 Tests | 7616 |
| | | 50 Tests | 3920 |
| | | 10 Tests | 840 |
| | | 1 Tests | 112 |
| RETROQUIC HIV | Rapid immunoconcentration test for detection of HIV-1 and/or HIV-2 antibodies in human serum/plasma | 100 Tests | 8306 |
| | | 50 Tests | 4327 |
| | | 10 Tests | 923 |
| RETROSCREEN HIV | Rapid immunochromatographic test for simultaneous and differential detection of HIV-1and HIV-2 antibodies in human serum/plasma | 25 Tests | 1344 |
| | | 50 Tests | 2520 |
| FLAVISCREEN HCV Plus | Rapid test for detection of antibodies to HCV in human serum/plasma | 50 Tests | 3920 |
| | | 10 Tests | 840 |
| COMBIQUIC HIV/HCV | Rapid immunoconcentration assay for detection of antibodies to HIV- 1 & 2& HCV in human serum/ plasma. | 50 Tests | 4760 |
| | | 10 Tests | 1000 |
| SENSA Hep-B | One step test for HBsAg | 25 Tests | 750 |
| | | 100 Tests | 3000 |

| ELISA ●●●●●●●● | | | |
|---------------------|--|-----------|--------------------|
| PRODUCT | DESCRIPTION | PACK | M.R.P. |
| | | | Inclusive of Taxes |
| TREPOLISA 3.0 | Third generation double antigen sandwich enzyme linked immunosorbent assay (ELISA) for the detection of antibodies to TreponemaPallidum in human serum or plasma | 96 Tests | 5520 |
| QUALISA – HIV 1 & 2 | Enzyme linked Immunosorbent assay (ELISA) for the detection of antibodies to HIV-1 & HIV-2 in human serum or plasma | 96 Tests | 3226 |
| | | 480 Tests | 15053 |
| QUALISA HIV 4.0 | Fourth Generation Enzyme linked Immunosorbent Assay (ELISA) for the detection of antibodies to HIV-1/2 & "0" subtypes & HIV-1p24 antigen in human serum or plasma. | 96 Tests | 5376 |
| | | 480 Tests | 25805 |
| QUALISA –HBsAg | Enzyme linked Immunosorbent assay (ELISA) for the detection of Hepatitis B surface antigen (HBsAg) in human serum or plasma | 96 Tests | 2150 |
| | | 480 Tests | 9677 |
| QUALISA – HCV | Enzyme linked Immunosorbent assay (ELISA) for the detection of antibodies to HCV in human serum or plasma | 96 Tests | 4408 |
| | | 480 Tests | 20966 |
| QUALISA MALARIA | Enzyme linked Immunosorbent Assay (ELISA) for the detection of malaria specific antigen (pLDH) in human blood. | 96 Tests | 5520 |
| QUALISA DENGUE NS1 | Enzyme linked Immunosorbent Assay (ELISA) for the detection of Dengue NS1 antigen in human serum or plasma | 48 Tests | 4560 |
| | | 96 Tests | 7680 |
| QUALISA DENGUE IgM | Enzyme linked Immunosorbent Assay (ELISA) for the detection of Dengue IgM antigen in human serum or plasma | 96 Tests | 10500 |
| QUALISA DENGUE IgG | Enzyme linked Immunosorbent Assay (ELISA) for the detection of Dengue IgG antigen in human serum or plasma | 96 Tests | 10500 |

Chemiluminescence ●●●●●●●●●●

| PRODUCT | DESCRIPTION | PACK | M.R.P. |
|-----------------------------|---|----------|--------------------|
| | | | Inclusive of Taxes |
| ELECTRA™ HIV Ag/Ab 4.0 CLIA | 4 TH Generation Chemiluminescence Immunoassay for detection of HIV 1/2 Antibodies and p24 Antigen in human serum or plasma | 96 Tests | 10500 |
| ELECTRA™ HBsAg Ag CLIA | Chemiluminescence Immunoassay for detection of HBsAg in human serum or plasma | 96 Tests | 5600 |
| ELECTRA™ HCV Ag CLIA | Chemiluminescence Immunoassay for detection of HCV Antibodies in human serum or plasma | 96 Tests | 9200 |
| ELECTRA™ MAL Ag CLIA | Chemiluminescence Immunoassay for detection of PAN Specific Malaria Antigen in human whole blood. | 96 Test | 5760 |
| ELECTRA™ Tp Ab CLIA | Chemiluminescence Immunoassay for detection of Treponema Pallidum in human serum/plasma. | 96 Test | 5760 |

ZEPHYR BIOMEDICALS

| IMMUNOLOGY | | INFECTIOUS DISEASE RANGE ●●●●●●●●●● | |
|--------------------------|--|-------------------------------------|--------------------|
| PRODUCT | DESCRIPTION | PACK | M.R.P. |
| | | | Inclusive of Taxes |
| LEPTOCHECK WB (Device) | Rapid immunochromatographic Tests for IgM antibodies to Leptospirosis in human serum, plasma and whole blood | 10 Tests | 2580 |
| HELICOCHECK | Rapid immunochromatographic assay for the detection of antibodies to H pylori in human serum/plasma | 10 Tests | 1242 |
| ENTEROCHECK WB (Device) | Rapid Test for the detection of IgM antibodies to <i>S.typhi</i> in serum/ plasma and whole blood | 25 Tests | 2214 |
| | | 50 Tests | 3960 |
| ENTEROSCREEN WB | Rapid Test for the differential detection of IgM and IgG antibodies to <i>S.typhi</i> in human serum/plasma/whole blood | 10 Tests | 1362 |
| | | 25 Tests | 3246 |
| DENGUCHECK COMBO | Rapid Immunochromatographic Test for detection of Dengue NS-1 antigen and IgG/IgM antibodies to Dengue virus in human Serum/Plasma | 10 Tests | 3350 |
| DENGUCHECK NS 1 (Device) | Rapid test for detection of NS1 antigen in human serum/ plasma | 10 Tests | 1700 |
| SEROCHECK TP (S) | Rapid test for Syphilis in human serum / plasma | 25 Tests | 450 |
| SEROCHECK TP (D) | Rapid test for Syphilis in human serum / plasma | 25 Tests | 550 |
| TOXOCHECK (D) | Rapid test for detection of IgM & IgG antibodies to <i>Toxoplasma gondii</i> in human serum or plasma | 10 Tests | 580 |

| IMMUNOLOGY | | PARASITOLOGY RANGE ●●●●●●●●●● | |
|-------------------------------|---|-------------------------------|--------------------|
| PRODUCT | DESCRIPTION | PACK | M.R.P. |
| | | | Inclusive of Taxes |
| FALCIVAX (Device) | Rapid Test For Malaria Pv/Pf | 1 Tests | 174 |
| | | 25 Tests | 3588 |
| | | 50 Tests | 5100 |
| | | 100 Tests | 9600 |
| PARASCREEN (Device) | Rapid Test For Malaria Pan/Pf | 25 Tests | 3372 |
| PARAMAX – 3 (Device) | Rapid Test For Malaria Pan/Pv/Pf | 1 Tests | 186 |
| | | 25 Tests | 3864 |
| PARABANK (Device) | Rapid Test For Malaria Pan | 25 Tests | 1926 |
| PARABANK (Dipstick) | Rapid Test For Malaria Pan | 25 Tests | 1608 |
| MALASCAN PLUS Pan/Pf (Device) | Rapid Test For Malaria Pf/Pan | 25 Tests | 2100 |
| | | 50 Tests | 3900 |
| LEISHCHECK | Rapid test for detection of Visceral Leishmaniasis antibody in human serum/plasma | 10 Tests | 1500 |

| IMMUNOLOGY | | CANCER MARKERS ●●●●●●●●●● | |
|-----------------|---|---------------------------|--------------------|
| PRODUCT | DESCRIPTION | PACK | M.R.P. |
| | | | Inclusive of Taxes |
| CANCHECK – PSA | Rapid test for detection of Prostate Specific Antigen (PSA) in human serum/plasma/whole blood | 10 Tests | 1254 |
| CANCHECK – FOBT | Rapid test for detection of Fecal Occult Blood in human faces | 10 Tests | 600 |

| IMMUNOLOGY | | OTHER MARKERS ●●●●●●●●●● | |
|-----------------|---|--------------------------|--------------------|
| PRODUCT | DESCRIPTION | PACK | M.R.P. |
| | | | Inclusive of Taxes |
| FERTICHECK LH | Rapid one step test for the detection of human Luteinising Hormone (hLH) concentration in urine | 5 Tests | 260 |
| AMICHECK-TROP I | Rapid test for the TROPONIN I in human whole blood | 10 Tests | 1800 |
| SICKLECHECK | A rapid, qualitative, Immunochromatographic assay for the simultaneous detection of Hb S and Hb A in human whole blood sample | 10 Tests | 700 |

| IMMUNOLOGY | COVID RANGE | | |
|--|--|-------------|--------------------|
| PRODUCT | DESCRIPTION | PACK | M.R.P. |
| | | | Inclusive of Taxes |
| COVISCREEN | Rapid double Antigen Sandwich immunoassay for the detection of Total antibodies (IgM+ IgA +IgG) to SARS- CoV-2 in human serum / plasma / whole blood | 10 Tests | 7350 |
| PERKINELMER® NEW CORONAVIRUS NUCLEIC ACID DETECTION KIT | For the qualitative detection of nucleic acid from SARS-CoV-2 in human oropharyngeal and nasopharyngeal swab samples | 48 Tests | 53760 |
| PERKINELMER® NEW CORONAVIRUS NUCLEIC ACID EXTRACTION KIT | For extraction and purification of RNA from nasopharyngeal swab , oropharyngeal swab, plasma and serum specimens. | 48 Tests | 12365 |
| VIRAL TRANSPORT KIT | Recommended for collection and transport of viruses | 50 Tests | 11400 |
| VIRAL TRANSPORT KIT I | Kit consists of 3 mL of Viral Transport Medium and sterile flocced nasopharyngeal swab, recommended for collection and transport of viruses | 50 Tests | 12000 |
| VIRAL TRANSPORT KIT II | Kit consists of 3 mL of Viral Transport Medium and sterile polyester swab, recommended for collection and transport of viruses | 50 Tests | 12000 |
| VIRAL TRANSPORT KIT III | Kit consists of 3 mL of Viral Transport Medium and sterile nasopharyngeal + throat swab, recommended for collection and transport of viruses. | 50 Tests | 12500 |
| SAFE SHIELD™ - VLTM | Viral Lysis and Transport Medium for molecular testing of RNA & DNA employing amplification tests. | 50 Tests | 15950 |
| DECON-R | Intended to remove traces of RNASE and virus contamination from Laboratory platforms, Tiles, Work bench surfaces, Laboratory apparatus, Equipments, Glass and Plastic surfaces | 10 x 200 ml | 5900 |

TERMS & CONDITIONS

- This price list supersedes all price lists previously announced.
- All products are for *in vitro* diagnostic use only. Not for medicinal use.
- Prices are subject to change without notice.
- Supplies shall be affected subject to availability of stocks and at prices prevailing at the time of dispatch.
- Products cannot be sold at prices higher than those indicated in this price list.
- For Imported products, 6-8 weeks will be required for delivery after receipt of confirmed order subject to availability.
- Imported products orders once placed cannot be cancelled.
- Any dispute subject to State of Goa Jurisdiction only.
- M.R.P is Inclusive of Taxes as printed on the cartons.

CORPORATE, MANUFACTURING AND BRANCH LOCATIONS

Corporate Office:

TULIP DIAGNOSTICS (P) LTD,

Gitanjali, Tulip Block, Dr. Antonio Do RegoBagh,

Alto Santacruz, Bambolim Complex,

P. O. Goa - 403 202, INDIA.

Tel.: (0832) 2458546 – 51.

Fax: (0832) 2458544.

E-mail: sales@tulipgroup.com

Website: <http://www.tulipgroup.com>

Manufacturing Locations:

TULIP DIAGNOSTICS (P) LTD,

Plot Nos. 92/96, Phase II C,

Verna Industrial Estate,

Verna, Goa - 403 722, INDIA.

Tel.: (0832) 6624555.

Fax: (0832) 2783511.

MICROXPRESS

A Division Of Tulip Diagnostics (P) Ltd.

Plot Nos. S-126, Phase III B,

Verna Industrial Estate,

Verna, Goa – 403 722, INDIA.

Tel.: (0832) 6624589, 6624590

Fax: (0832) 2782836.

ORCHID BIOMEDICAL SYSTEMS

Plot Nos. 88/89, Phase II C,

Verna Industrial Estate,

Verna, Goa - 403 722, INDIA.

Tel.: (0832) 6682000, 6624501-02

Fax: (0832) 2783139.

QUALPRO DIAGNOSTICS

1st Floor, Plot Nos. 88/89, Phase II C,

Verna Industrial Estate,

Verna, Goa - 403 722, INDIA.

Tel.: (0832) 6682000, 6624501-02.

Fax: (0832) 2783139.

ZEPHYR BIOMEDICALS

Plot No. M-46/47, Phase III B,

Verna Industrial Estate,

Verna, Goa - 403 722, INDIA.

Tel.: (0832) 6624605.

Fax: (0832) 6680156.

BRANCH OFFICES:

- Delhi:** 84, Lal Singh Building,
2nd Floor, 205/206,
Near Agarwal Sweets, Vasant Kunj Road,
Mahipalpur, New Delhi-110037-39
Ph. No 011-46062637-39
Fax no. 011-46062640
E-mail: tulipdelhik@yahoo.co.in
- Kolkata :** Flat No: 9A, 9th Floor, 3A, Auckland Place,
Kolkata – 700017, INDIA.
Tel.: (033) 22837919 – 23.
Fax: (033) 22837924.
E-mail: tulipkol@gmail.com
- Mumbai:** Lodha Supremus,
Unit No. 804&805,
Road No.22, MIDC,
Wagle Estate,
Thane- 400 604.
Phone No:022 25871644/45/46/47/48
E-mail: tulipmumbai123@gmail.com
- Chennai :** Plot No. 1200 (1st Floor), Z – Block,
6th Avenue, 14th Street,
Annanagar Chennai – 600 040, INDIA
Tel: (044) 2628 6467, 26193125.
E-mail:tulipmds@gmail.com
- Kerala:** Thattil Nadakalan Complex, Kuriachira P.O.,
Thrissur, Kerala – 680006, INDIA.
Telefax: (0487) 2250793, 6544048.
E-mail: tulipkerala@gmail.com
- Bangalore:** Tulip Diagnostics (P) Ltd
2,5th Cross. Ramgopal Layout, Subbaina Palya,
Banaswadi Main Road
Bangalore-560 043
Ph:080 4252 4000
Fax:080 4252 4010
E-mail: tulipdiagnostics@gmail.com
- Lucknow:** 16/414, 1st Floor, Sector 16,
Indira Nagar, Lucknow – 226016, INDIA
Ph: 0522 4955888/3950851-52
E-mail- lucknowtulip@gmail.com

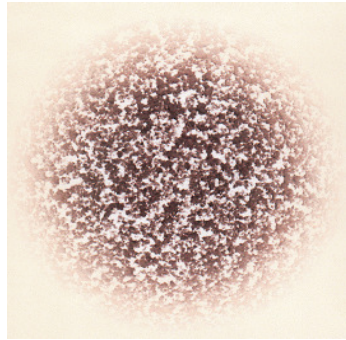
Hyderabad: H.No: 5-70,Beside Andhra Bank, Street
No:8, Habsiguda,
Hyderabad-500007
Ph: (040) 27177885.
E-mail: tulipgroup.hyd@gmail.com

Nagpur: Plot no.76, IRIS, First Floor,
Hindustan Colony, Near Sai Mandir,
Wardha Road, Nagpur – 440015.
Telefax: (0712) 2240624/6462774
E-mail: tulipnagpur@gmail.com

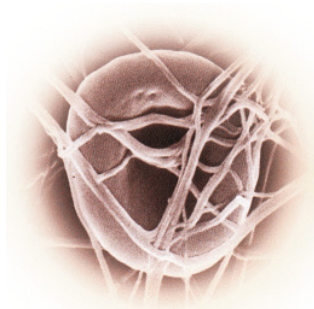
Pune: Lokmanaya Tilak Bhavan,
A Wing, 2nd Floor,
568, Narayan Peth,
Near Kesari Wada,
Pune – 411030.
Telefax: (020) 24430664
E-mail: tulippune@gmail.com

Baroda: 3rd Floor, Sarang House
Near Sakar Bungalow
Ward No.6, Off. Lane
Akota, Baroda – 390 020, INDIA
Telefax: (0265) 2333382.
E-mail: gujaratoffice.tulip@gmail.com

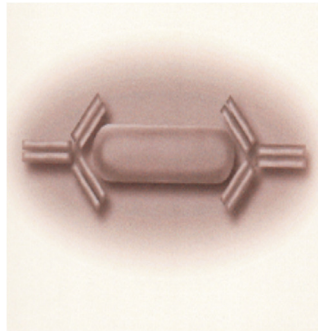
Jamshedpur: 2D, 2nd Floor, Bala Prasad
SB shop Area,
R, Road, Bistupur
Jamshedpur- 831001
Jharkhand
Tel: 0657- 2321142,2321143
E-mail: tulipjsr14@gmail.com



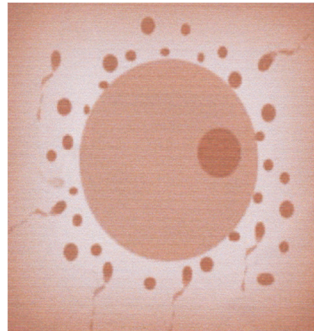
IMMUNOHAEMATOLGY



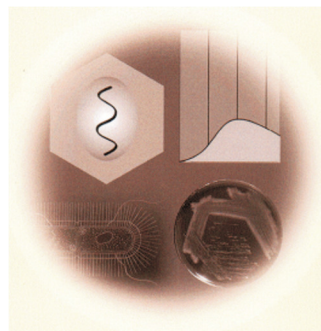
HAEMOSTASIS



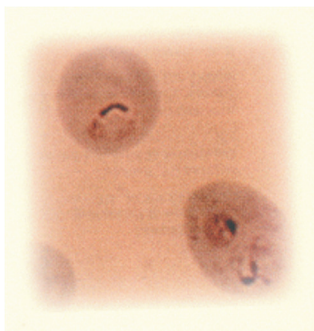
IMMUNOLOGY



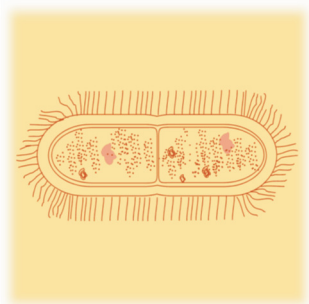
FERTILITY



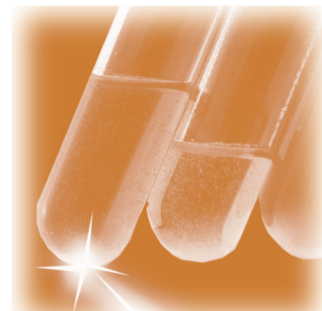
INFECTIOUS DISEASES



PARASITOLOGY



MICROBIOLOGY



CLINICAL CHEMISTRY

For further information, contact:



TULIP DIAGNOSTICS (P) LTD.

Tulip Block, Dr. Antonio Do Rego Bagh, Alto - Santacruz, Bambolim Complex P.O., Bambolim, Goa. 403 202. INDIA.
Tel.: +91 832 2458546-51. Fax: +91 832 2458546. e-mail: sales@tulipgroup.com. Website: www.tulipgroup.com